

# GRADE 8 PROGRAM PLANNING 2025-2026



J.N. BURNETT SECONDARY SCHOOL





# LAND ACKNOWLEDGEMENT

We would like to acknowledge and thank the hən̓q̓əmiñəm speaking xʷməθkʷəy̓əm people on whose traditional, ancestral, and unceded territories we are gathered here today. We acknowledge we are uninvited non-Indigenous guests on this land which has been cared for by the xʷməθkʷəy̓əm people for thousands of years.



# Questions?

During the presentation, feel free to ask general questions in the chat. We will be answering them throughout the session.



# CONTENT OUTLINE

**05**

COUNSELLING TEAM

**06**

IMPORTANT DATES

**07 - 09**

COURSE OPTIONS

**10 - 11**

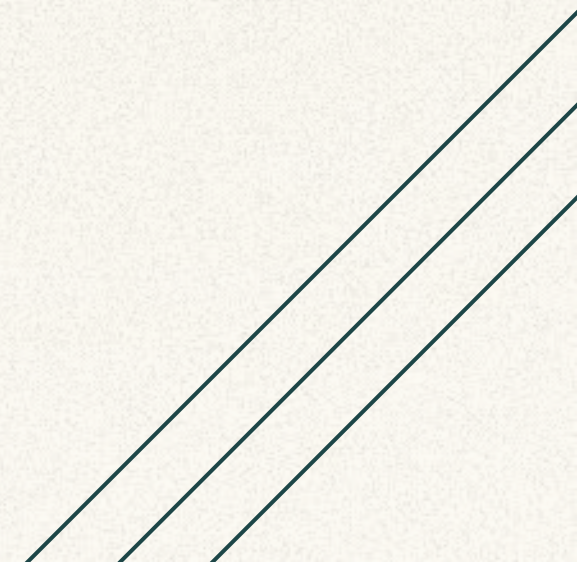
SCREENING ASSESSMENTS

**12 - 20**

PROGRAM PLANNING AND ELL  
TIMETABLES

**21 - 26**

HIGH SCHOOL LIFE





# COUNSELLING DEPARTMENT

**MS. YIP**

Last names A-H



**MS. MURAD**

Last names I-Se



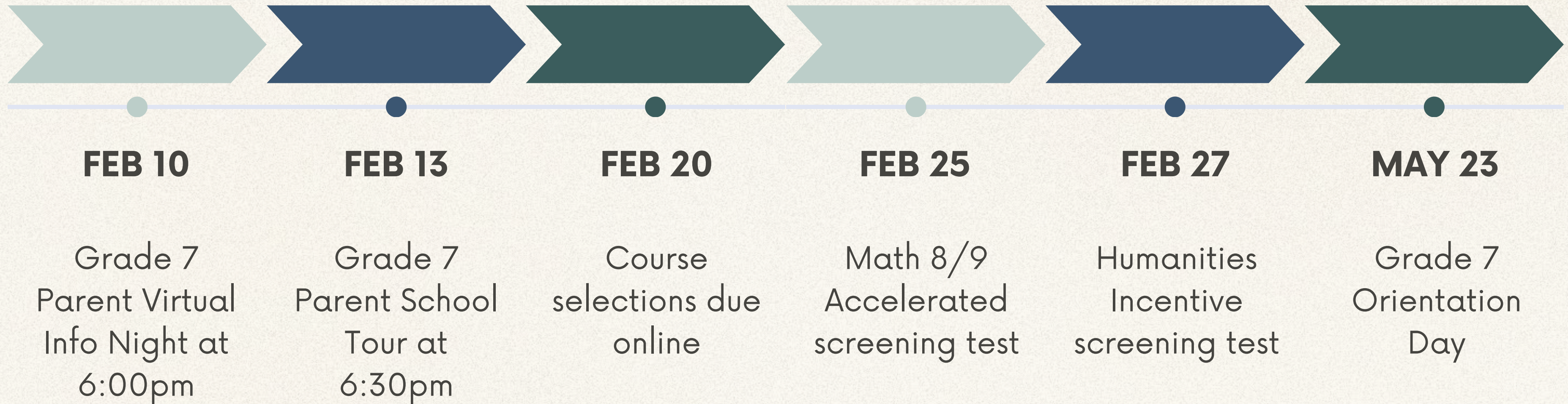
**MRS. GRENZBERG**

Last names Sh-Z





# IMPORTANT DATES





# TIMETABLES

## SEMESTERED SYSTEM

- The school year is divided into two 5-month terms
- Eight courses total, four in each term

## SEMESTER 1

- Semester 1 is typically September to January

## SEMESTER 2

- Semester 2 is typically February to June

## BURNETT LEARNING TIME (BLT)

- Occurs every Tuesday and Thursday 8:30-9:25am
- Attend one of your four classes for extra help or to make up for missed labs/tests



# GRADE 8 COURSES

**Humanities  
or ELL  
(linear)**

**Science**

**Math**

**Physical  
Education**

**Home  
Economics/  
Technology  
Education**

**French**

**Elective  
(Art, Drama,  
or Music)**







# SPECIALTY COURSES

HUMANITIES  
INCENTIVE

Enriched course

MATH 8/9  
ACCELERATED

Covers both  
grade 8 and 9  
math curriculum

ELL  
HUMANITIES

ELL 4 in term 1,  
ELL Humanities in  
term 2



# MATH 8/9 ACCELERATED SCREENING TEST

**FEB 25, 2025 FROM 3:15-4:30PM**

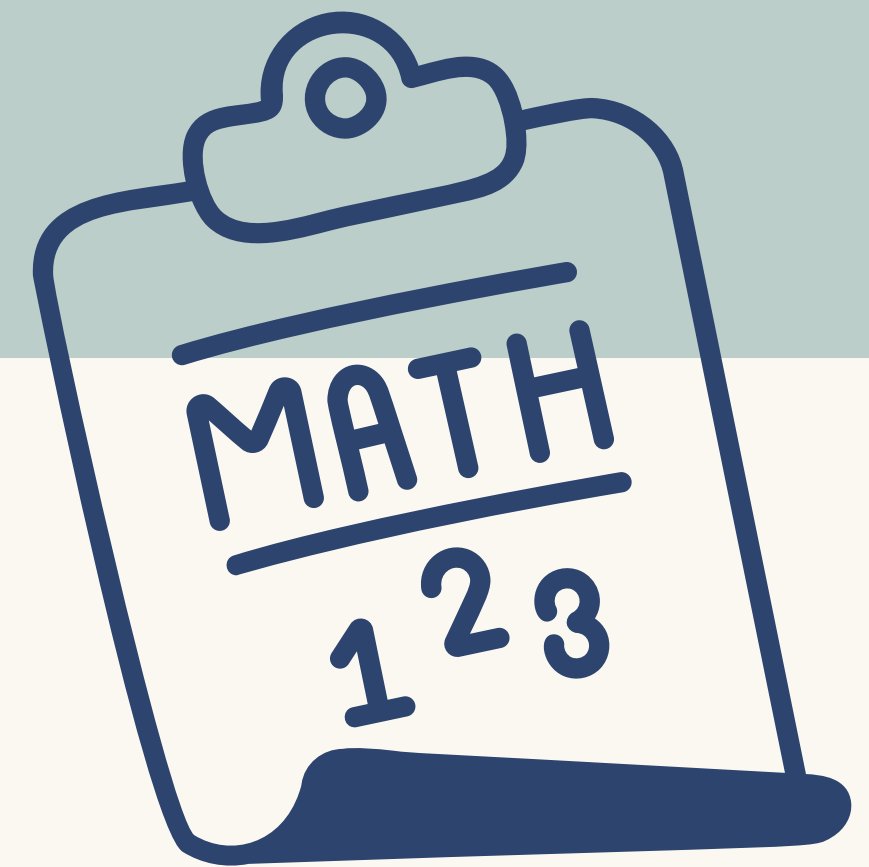
**MULTI-PURPOSE ROOM @ J.N. BURNETT**

**Bring a pencil, pen, & eraser**

Your parents need to sign you up online by **Feb 21, 2025**

<https://forms.office.com/r/5pdAWf1xeX>

Top 40 students' teachers will receive a teacher recommendation form





# **HUMANITIES INCENTIVE SCREENING TEST**

**FEB 27, 2025 FROM 3:15-4:30PM**

**MULTI-PURPOSE ROOM @ J.N. BURNETT**



**Bring a pencil, pen, & eraser**





# PROGRAM PLANNING FORM



---

<https://tinyurl.com/JNBgr7pp>



## 2025-2026 JN Burnett Grade 8 Program Planning

We recommend having the 2025-2026 Grade 8 Program Planning Book nearby when selecting your courses - See link below. We ask that if you have to make any changes, that you please submit a new form and we will use the one most recently submitted. Please complete this form by Friday, February 20.

- **The Grade 8 Program Planning Guide** can be found here: <https://jnburnett.sd38.bc.ca/student-life/program-planning-course-selection/grade-8-burnett-courses>.
- **If you currently don't attend a JN Burnett Catchment school**, please visit the Richmond School District's website for catchment and transfer process information: <https://sd38.bc.ca/student-registration/transfer-applications>

\* Required

### Demographic Information

1. Student Last Name \*

2. Student Legal First Name \*

3. Student Preferred;Usual Name \*

4. Date of Birth \*



5. Street Address \*

6. Parent Email \*

7. Parent Phone Number \*

8. Student Cell Phone Number

If available. We sometimes use this number to connect with students with clarification.

9. Current School \*









11. Do you currently have an IEP or receive support from a Learning Resource Teacher? \*

Select all that apply

- Yes, I have an IEP
- Yes, I receive support from a Learning Resource Teacher
- No
- Unsure
- Other

12. **Optional: If you would like to be considered for a Special course, please check the appropriate box(es) below.**

In addition to selecting a box below, you must write the Incentive Assessment. Please refer to the Grade 8 Program Planning Book and the Burnett Secondary School Website for assessment details.

- Humanities 8 Incentive
- Math 8/9 Accelerated

13. **Are you currently enrolled in ELL? \***

- Yes
- No



# ELL STUDENTS ONLY

## ELL Information

13. Projected ELL Level \*

Level 1

Level 2

Level 3

Level 4

Level 5

14. Current ELL Teacher's Name \*

Enter your answer

Please ask your teacher  
what your projected ELL  
level will be in  
September



## Final Information

15. Do you have any additional information you would like us to know?

Enter your answer


16. **PARENT: By typing your FULL NAME, this confirms a parent/guardian's electronic signature of the Grade 8 Program Planning Request Form. \***

We encourage you to print/screen shot/ or save your responses.

Enter your answer

You can print a copy of your answer after you submit

For parents to  
e-sign after  
reviewing form





# LEVELS 1 & 2 ELL PROGRAM

Level 1 and 2 ELLs have **3 blocks** of ELL

This is what a typical schedule may look like:

Semester 1	Semester 2
ELL 1A or 2A	ELL 1C or 2C
ELL 1B or 2A	PE
Math 8	Elective
Home Ec/Tech Ed	Elective



# LEVEL 3 ELL PROGRAM

Level 3 ELLs have **2 blocks** of ELL

This is what a typical schedule may look like:

Semester 1	Semester 2
ELL 3A	ELL 3B
Science 8	French 8
PE 8	Math 8
Home Ec/Tech Ed	Elective



# LEVEL 4 ELL PROGRAM

Level 4 ELLs have **1 block** of ELL

This is what a typical schedule may look like:

Semester 1	Semester 2
ELL 4	Humanities 8
Science 8	French 8
PE 8	Math 8
Home Ec/Tech Ed	Elective



# HIGH SCHOOL LIFE

- Locker (optional)
- Multiple teachers and classrooms
- Increased homework
- Larger building and population
- More sports
- More clubs





# STUDENT RESPONSIBILITIES

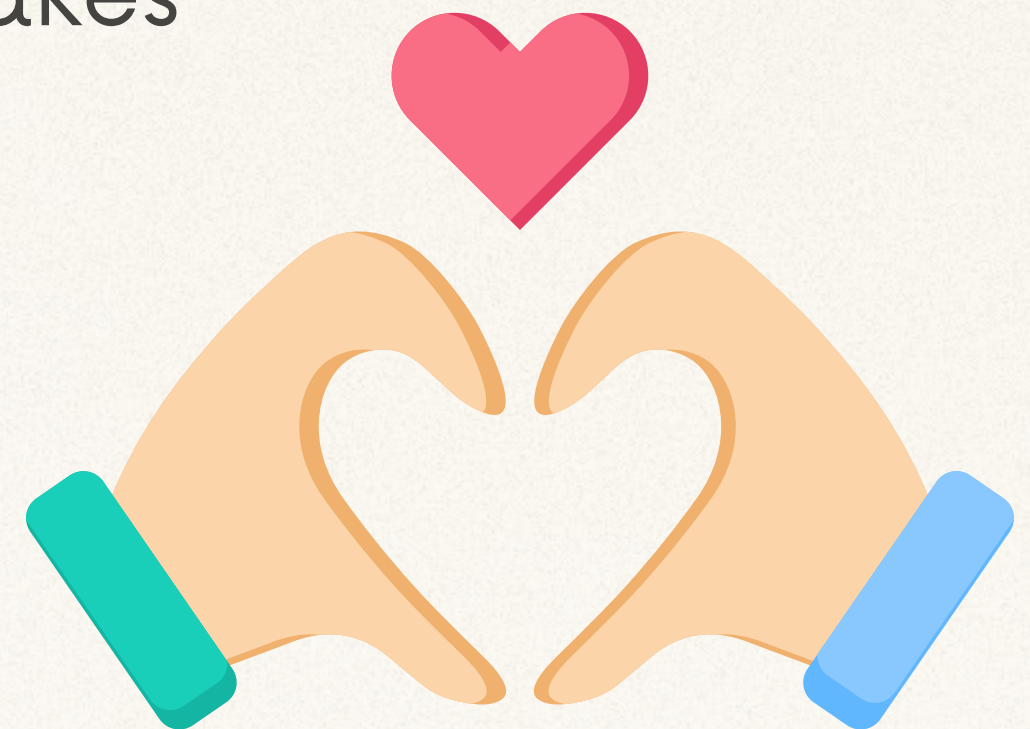
- Since we are a semestered school where the same four classes occur daily, missing school for multiple days can have a significant impact on your learning
- If you are absent, please make sure your parent/guardian phones the school
- It is **your responsibility** to reach out to your teachers to find out what notes/assignments you missed
- You can also buddy up with a classmate so you can get notes/assignments from them





# STUDENT RESPONSIBILITIES

- Be kind, brave, and empathetic
- Explore and try new things
- Ask questions and don't be afraid to make mistakes
- Self-advocate



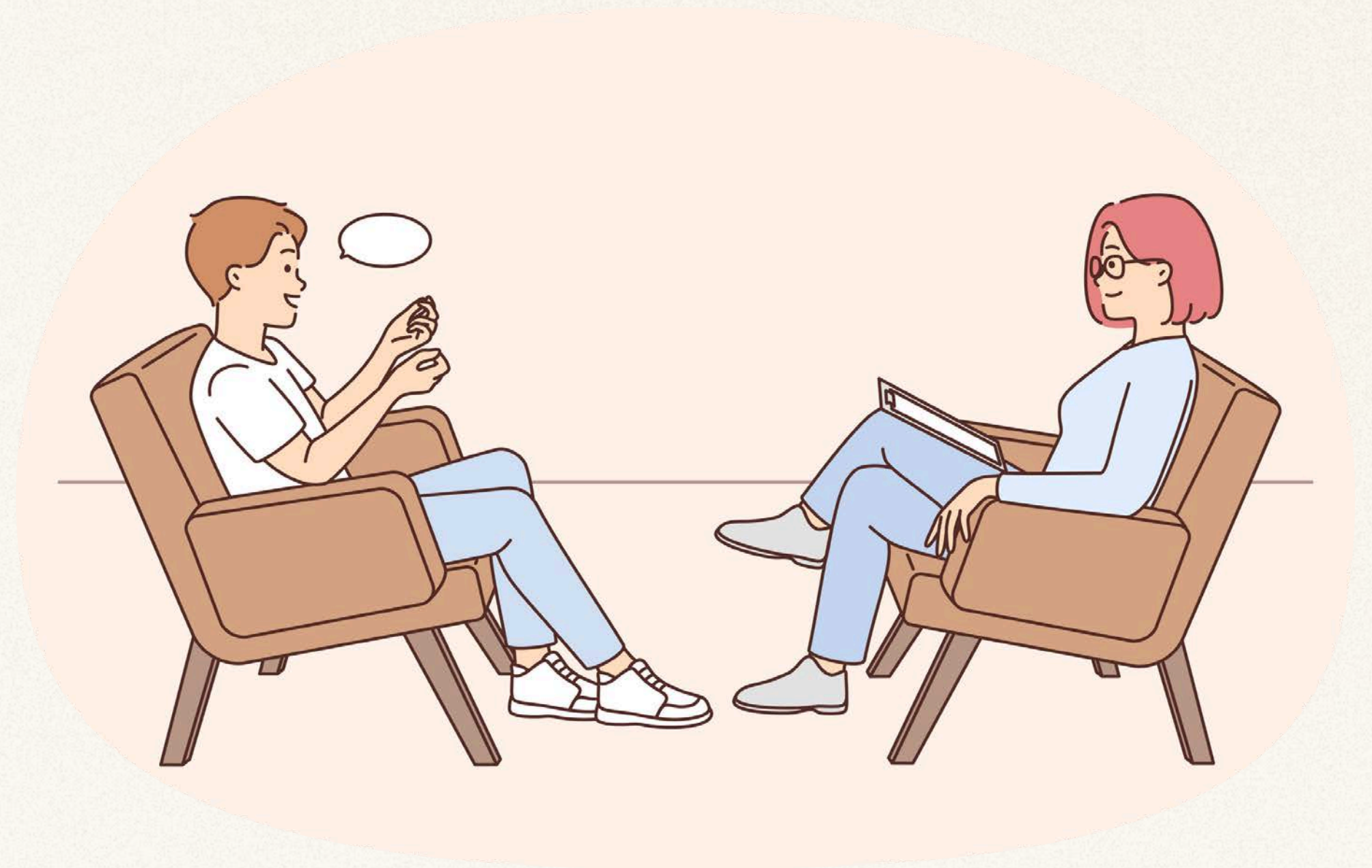


# SCHOOL COUNSELLORS

You talk, we listen and guide you!

What we offer:

- Emotional support
- Academic support
- Psychoeducation
- Program planning
- Scholarship information



Appointments are made online. Link/QR code will be shared in September



# SPORTS AT BURNETT



## Fall Season (Sep-Nov)

- Volleyball (all grade girls & grade 10-12 boys)
- Boys Soccer
- Swimming
- Cross Country

## Winter Season (Nov-Mar)

- Basketball
- Ski/Snowboard Club
- Table Tennis

## Spring Season (Mar-Jun)

- Volleyball (grade 8&9 boys)
- Track and Field
- Girls Soccer
- Ultimate
- Tennis
- Golf
- Badminton



## SERVICE CLUBS

- ANIMAL RESCUE
- BOXES OF HOPE
- BREAKERS THAT CARE
- BREAKER WAVE
- GREEN TEAM
- CANCER ASSOCIATION
- FASHION FOR COMPASSION
- FIRST RESPONDERS
- INTERACT
- LITERARY MAGAZINE
- OPERATION SMILE
- PROJECT SERVE
- SENIOR SMILES
- STUDENT COUNCIL
- STUDY BUDS
- TEENS TEACH TECHNOLOGY
- UPLIFT WITH STEM

## SOCIAL CLUBS

- ANIME CON
- BGT AND MAKER SPACE
- CHESS
- COMPUTER SCIENCE
- E-SPORTS
- GAME DEVELOPMENT
- GAMES
- GRADE COMMITTEE
- MINECRAFT
- MOVIE
- TEA TIME

## ATHLETIC CLUBS

- ACTIVE CONNECTIONS
- ATHLETIC COUNCIL
- BADMINTON
- CLIMBERS
- DANCE
- LIFTS
- ULTIMATE

## LEARNING CLUBS

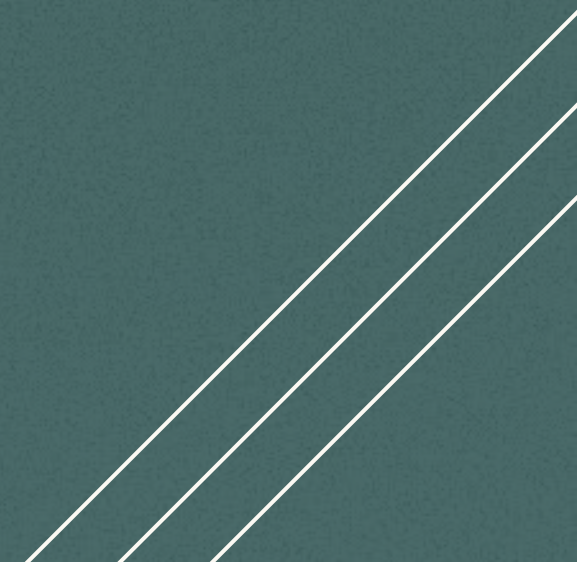
- ASPIRE BUSINESS
- BAND
- BOOK
- CHINATOWN YOUTH ENGAGEMENT
- CLIMATE ACTION NOW
- CHRISTIAN COMMUNITY
- DEBATE
- INVEST ED
- JAPANESE CULTURE
- HISTORY AND ARTIFACTS
- MATH
- MODEL UNITED NATIONS
- PHILOSOPHY
- PSYCHE STUDY
- ROBOTICS
- SCIENCE
- SINGING
- VOICE
- SPARK
- SAGA
- STUDIO
- TRIVIA
- USE YOUR VOICE
- WOMEN IN LEADERSHIP

# CLUBS AT BURNETT





# QUESTIONS & ANSWERS





**THANK YOU!**

**SEE YOU ON FEB 13 AT  
6:30PM FOR THE  
SCHOOL TOUR!**