

Locker Portal

How to Access Locker Portal



SCAN QR

<https://lockerportal.powerappsportals.com/>

RICHMOND
SCHOOL DISTRICT NO.38

Sign in

Email, phone, or Skype

Your ID: *****@sd38.bc.ca

Next



RICHMOND
SCHOOL DISTRICT NO.38



Enter password

Password

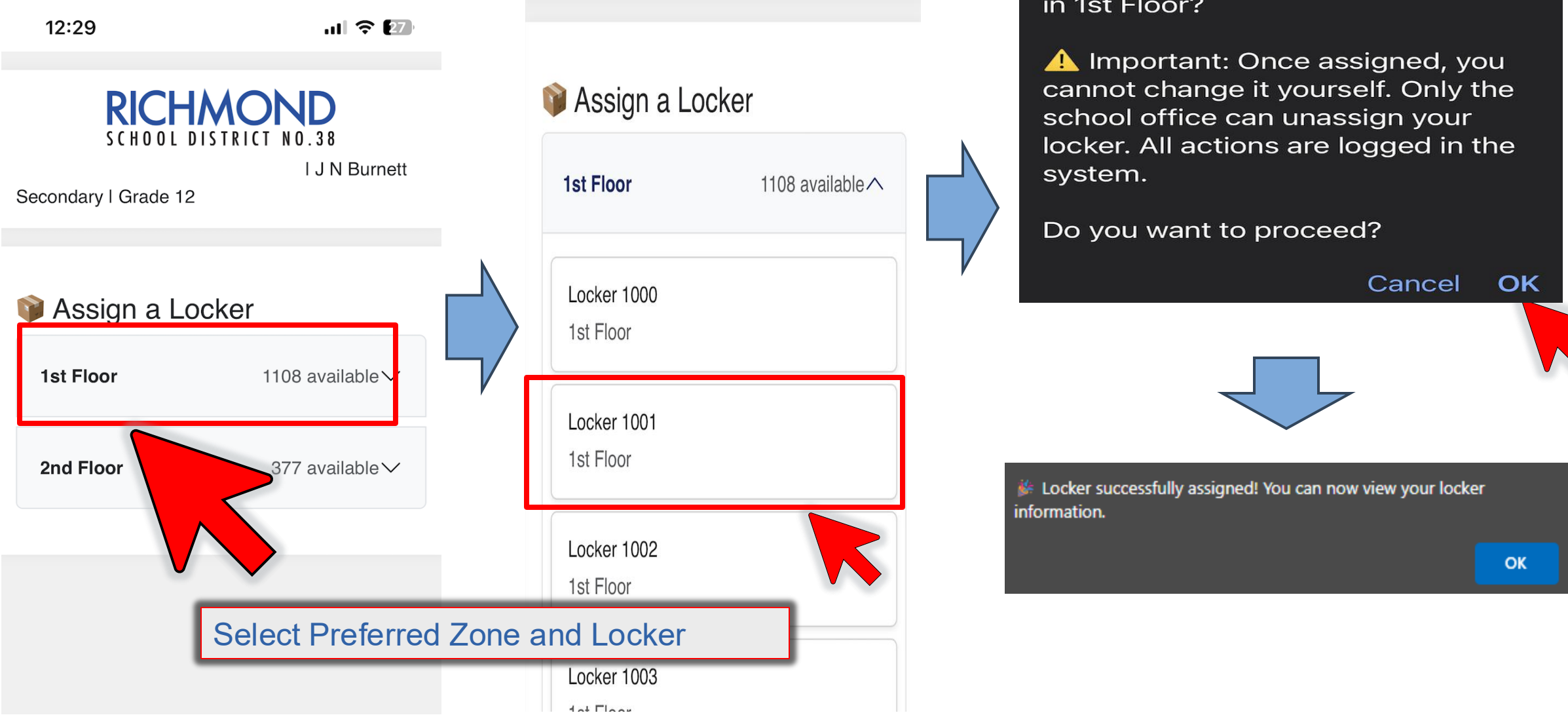
[Forgot my password](#)

Sign in

Your Password

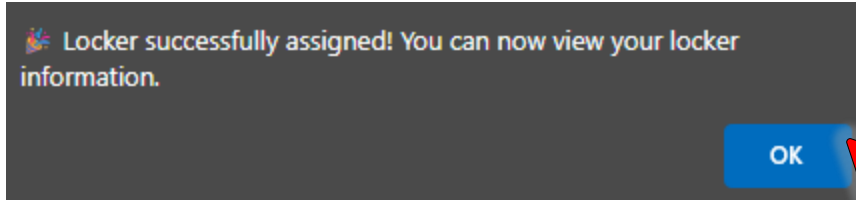
Assign Locker

How to Assign Locker (1/2)



Assign Locker

How to Assign Locker (2/2)



If locker assignment is successfully completed, you can check the assigned locker and enter the combination.

Click on the CHANGE button, enter your combination, and then click on the **green** SAVE button.

If your locker combination changes, you can repeat the process above to enter your new combination and save it.

You **must** enter 4-10 characters for your combination.

Examples:

- combination lock: 3-15-21
- directional lock: U-D-L-R-U (for up, down, left, right, up)
- single digit lock: 0004
- keyed lock: keyed

Your Locker Info

Locker 1021

 **Zone:** 1st Floor

 **Combination:**

Save

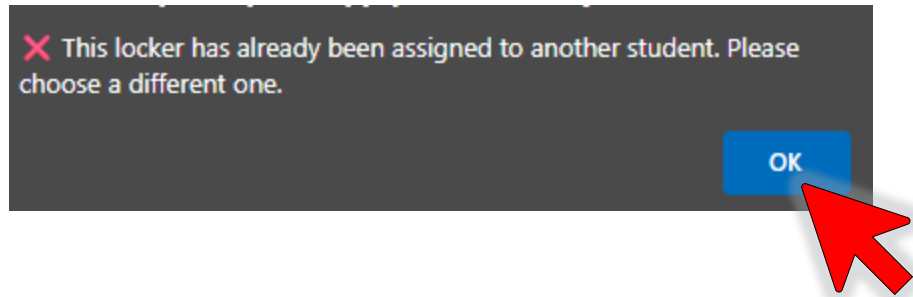
IMPORTANT SECURITY NOTICE

To protect your locker combination, please **CLOSE THIS BROWSER COMPLETELY** after viewing your combination.

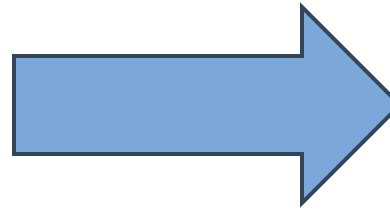
- Do not just close this tab - close the entire browser window
- This prevents unauthorized access to your locker information
- Always LOG OUT and CLOSE BROWSER from shared or public computers

Assign Locker

When Locker Assignment Fails




If another student assigns the locker you selected before you do, **you must select a different locker.**



12:29 📶 🔋 27

RICHMOND
SCHOOL DISTRICT NO. 38
I J N Burnett

Secondary | Grade 12

 Assign a Locker

1st Floor	1108 available ▾
2nd Floor	377 available ▾